



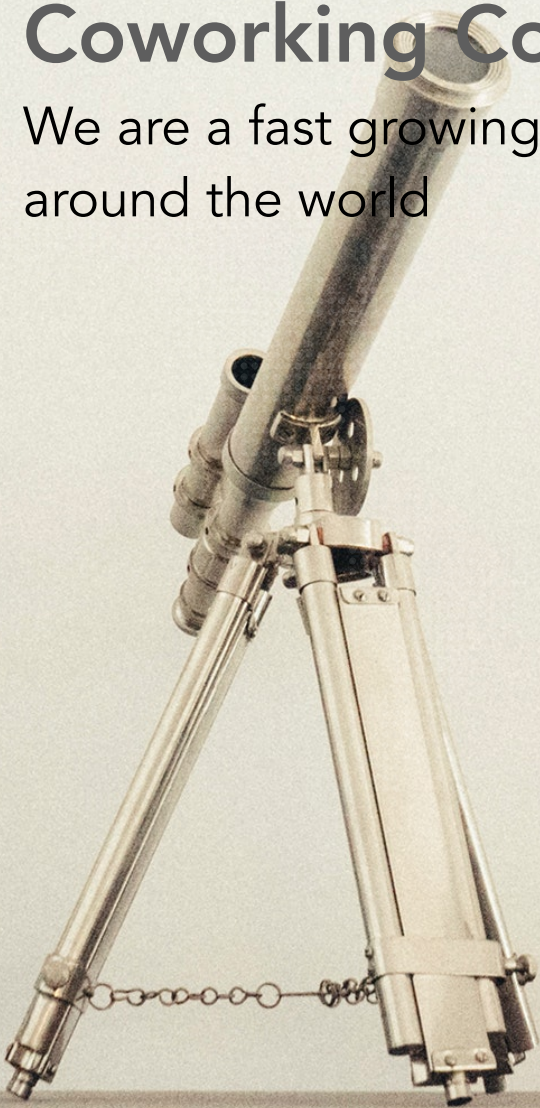
2 WATERS PARK
coworking space

BROCHURE

(650) 865-3980
HELLO@2WATERSPARK.COM
2 WATERS PARK DRIVE
SUITE 250
SAN MATEO, CA 94403

Welcome To The World Leading Coworking Community

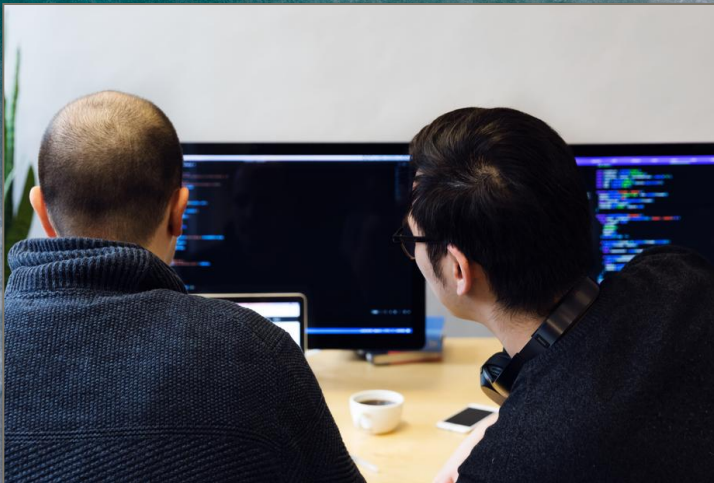
We are a fast growing community with members from all around the world



COMMUNITY

EVENTS

2 Waters Park Membership provides you opportunities to join our pitch competition, conference, career fair, networking events and more.



ACADEMY

Members can join our Academy to explore the world of leading technologies. We welcome and are open to Investors, VC, Startups and engineers.

PLAYGROUND

Community members can join our uniquely designed off-line meet ups and parties. We call it the Playground



ABOUT US

Our space is redefining the way work is done. That's why we've cultivated a community of thinkers, achievers and imagineers. Our location is conveniently surrounded by shopping and dining venues and located between San Francisco and San Jose. Plug into our energy and watch your world accelerate.

60

Dedicated Desk

12

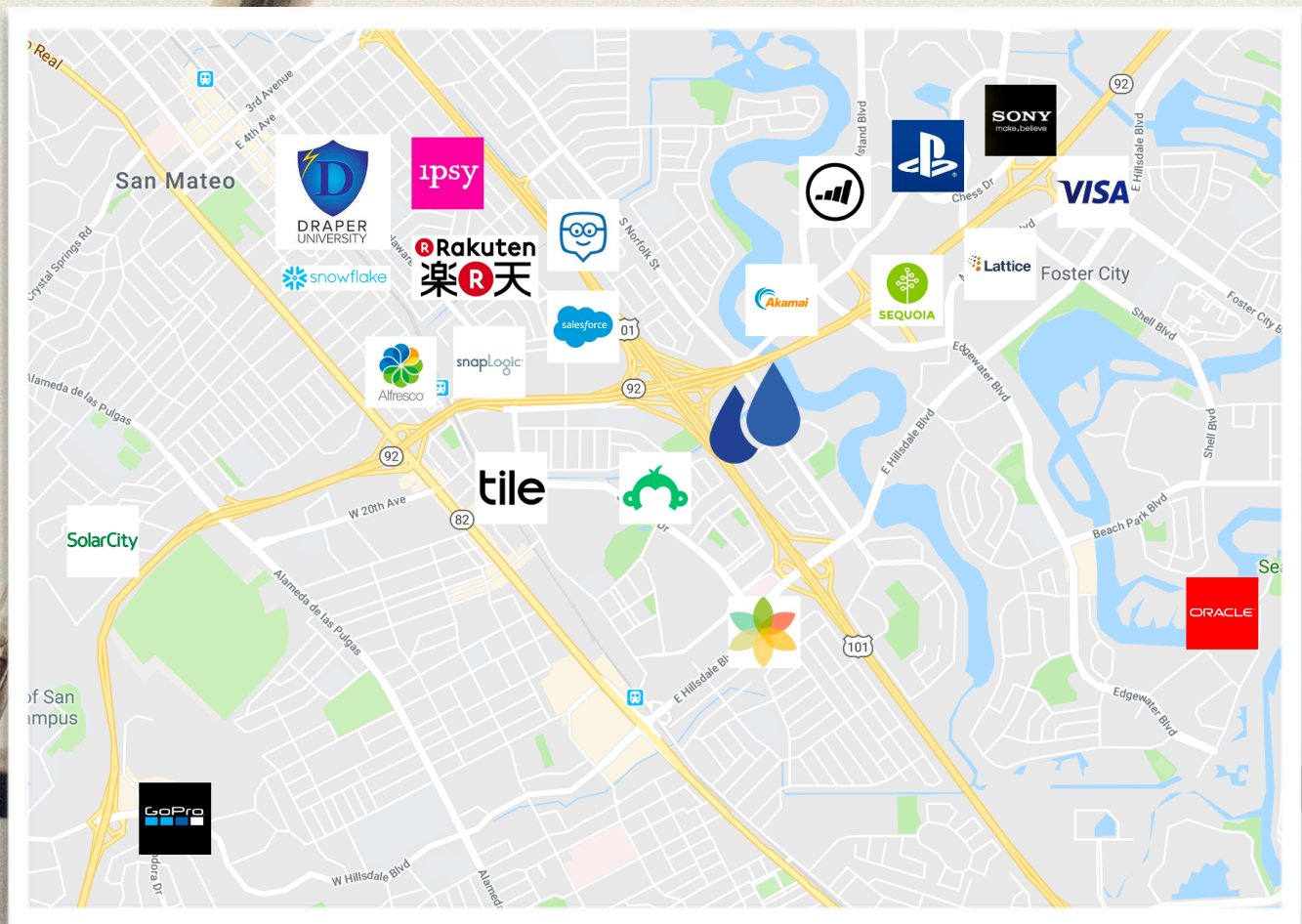
Office Room

11,124
sq ft

Office space

3,000
sq ft

Common Area



LOCATION

2 WATERS PARK



Campus



Front Desk



Table Soccer and Ping Pong



Meeting Room



Office



Dedicated Desk

AVAILABILITIES

2 Meeting Rooms

For meetings up to 16 People

3000 Square Feet

Common Area

60 Dedicated Desks

trash can, and lockable filing

10 Private Offices

49 inch Roku TV

PLANS AND SERVICES

PRICING BREAKDOWN

	Month-to-Month	6 Month	12 Month	Meeting Room 1	Meeting Room 2
Membership	\$649.00	\$649.00	\$649.00	\$100 / Hr	\$75 / Hr
Dedicated Desk*	\$787.00	\$749.00	\$712.00	2 Hours / Month	3 Hours / Month
Office A*	\$4078.00	\$3811.00	\$3545.00	4 Hours / Month	6 Hours / Month
Office B	\$3776.00	\$3529.00	\$3282.00	4 Hours / Month	6 Hours / Month
Office C	\$3776.00	\$3529.00	\$3282.00	4 Hours / Month	6 Hours / Month
Office D	\$4418.00	\$4129.00	\$3840.00	4 Hours / Month	6 Hours / Month
Office E	\$4909.00	\$4588.00	\$4267.00	4 Hours / Month	6 Hours / Month
Office F	\$6042.00	\$5646.00	\$5251.00	4 Hours / Month	6 Hours / Month
Office G	\$7552.00	\$7058.00	\$6564.00	4 Hours / Month	6 Hours / Month

*The setup fee is \$150 for dedicated desk and \$300 for office

PLANS AND SERVICES

MEETING ROOM PRICING BREAKDOWN

Meeting Room (Medium) Rate

	1 Hour	5 Hours	Day Pass
Member	\$45.00	\$185.00	\$300.00
Non-Member	\$75.00	\$250.00	\$450.00

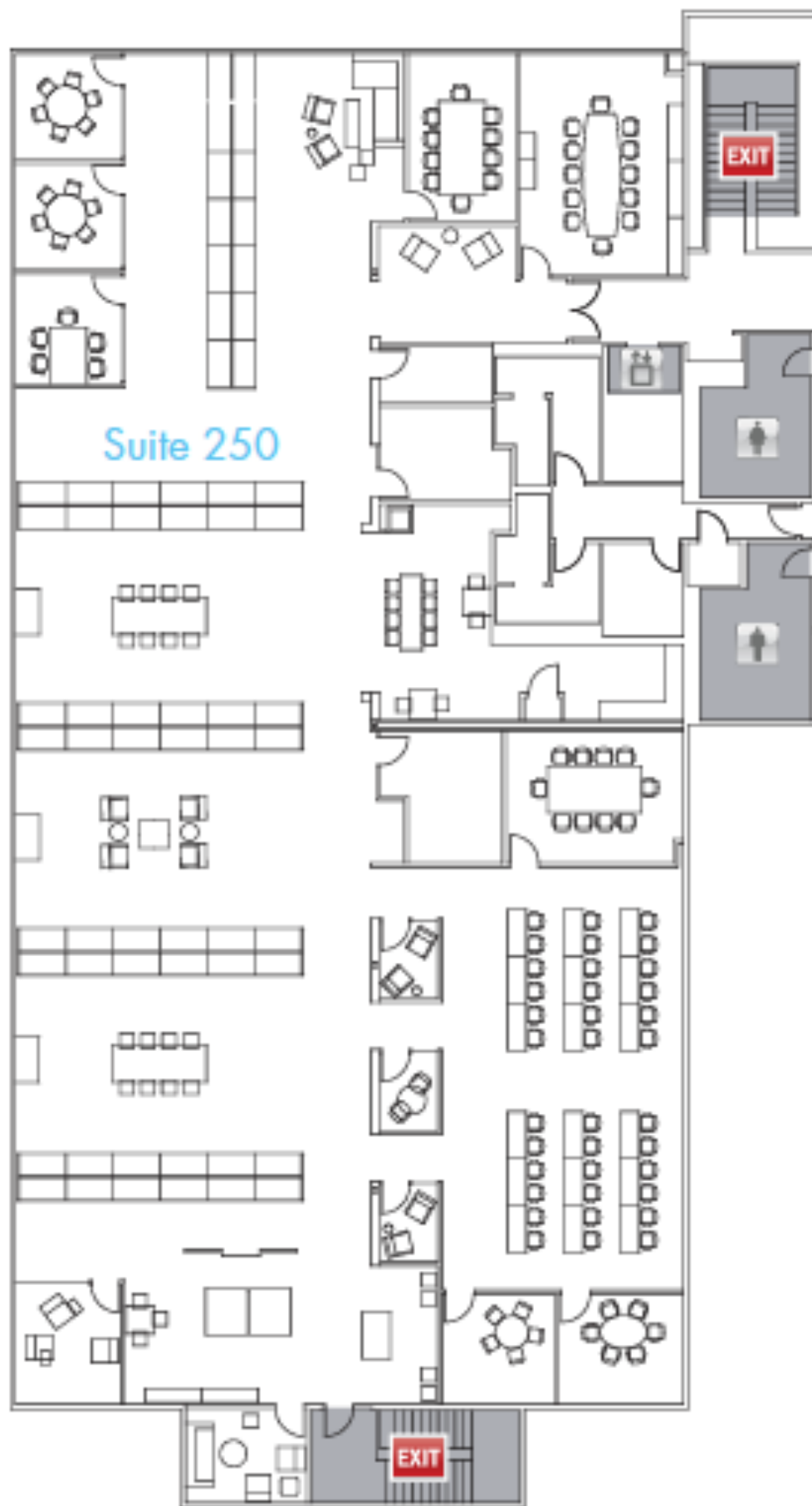
Meeting Room (Large) Rate

	1 Hour	5 Hours	Day Pass
Member	\$65.00	\$225.00	\$400.00
Non-Member	\$100.00	\$400.00	\$600.00

PLANS AND SERVICES

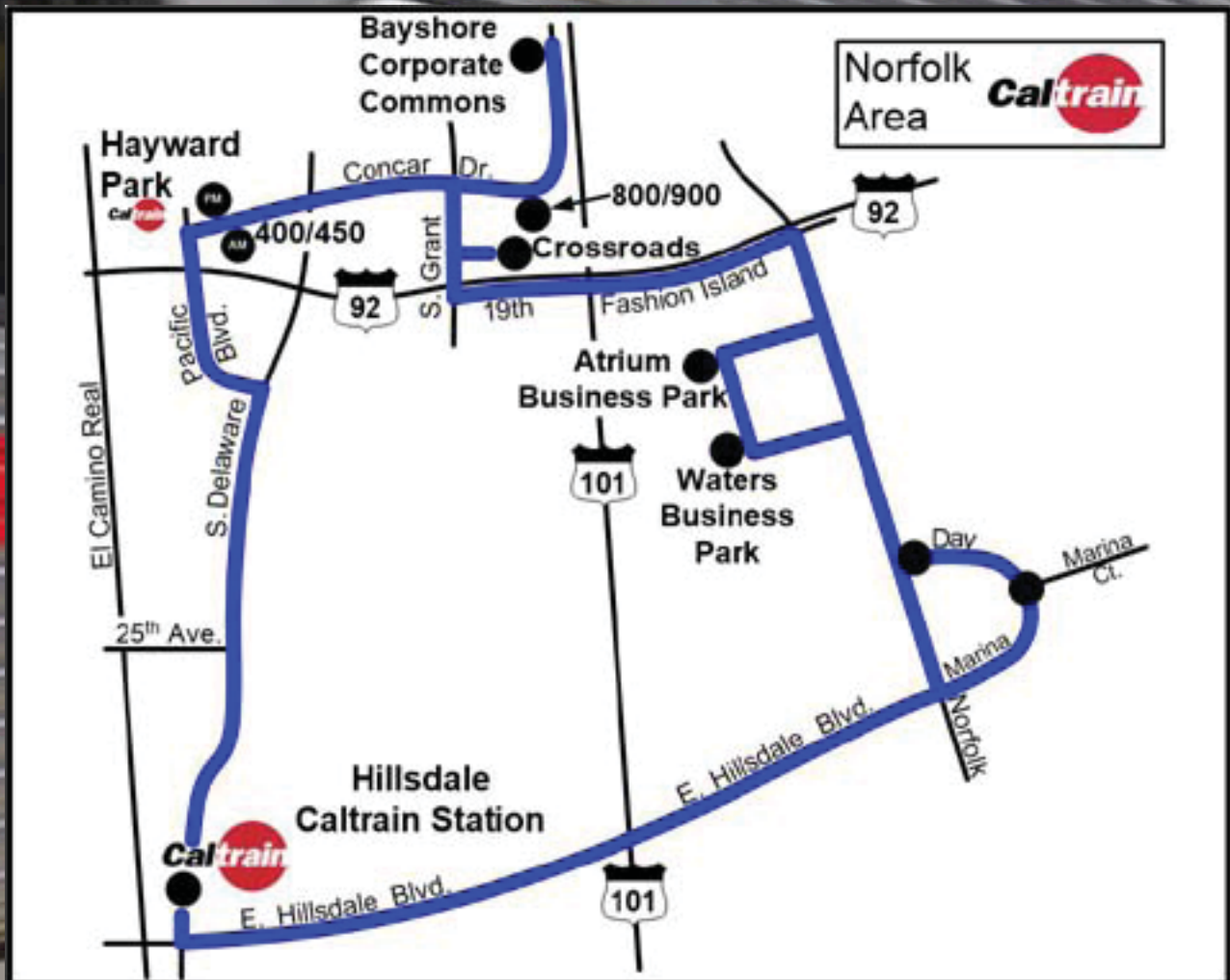
SERVICES BREAKDOWN

Services	Classroom	Meeting Room	Membership	Dedicated Desk	Private Office
Gigabit Internet	✓	✓	✓	✓	✓
Micro-roasted Coffee	✓	✓	✓	✓	✓
Daily Cleaning	✓	✓	✓	✓	✓
Front Desk Service	✓	✓	✓	✓	✓
Community Managers	✓	✓	✓	✓	✓
Weekly Newsletter	✓	✓	✓	✓	✓
Exclusive Events	✓	✓	✓	✓	✓
Healthy Snacks by OhMyGreen	✓	✓	✓	✓	✓
Private Phone Booths	✓	✓	✓	✓	✓
Showers	✓	✓	✓	✓	✓
Event Discount		✓	✓	✓	✓
Business-class Printers		✓	✓	✓	✓
Pitching Opportunities			✓	✓	✓
NewDo Consulting Discount			✓	✓	✓
Meeting Room Discount			✓	✓	✓
Mail & Package Handling				✓	✓
24/7 building access					✓

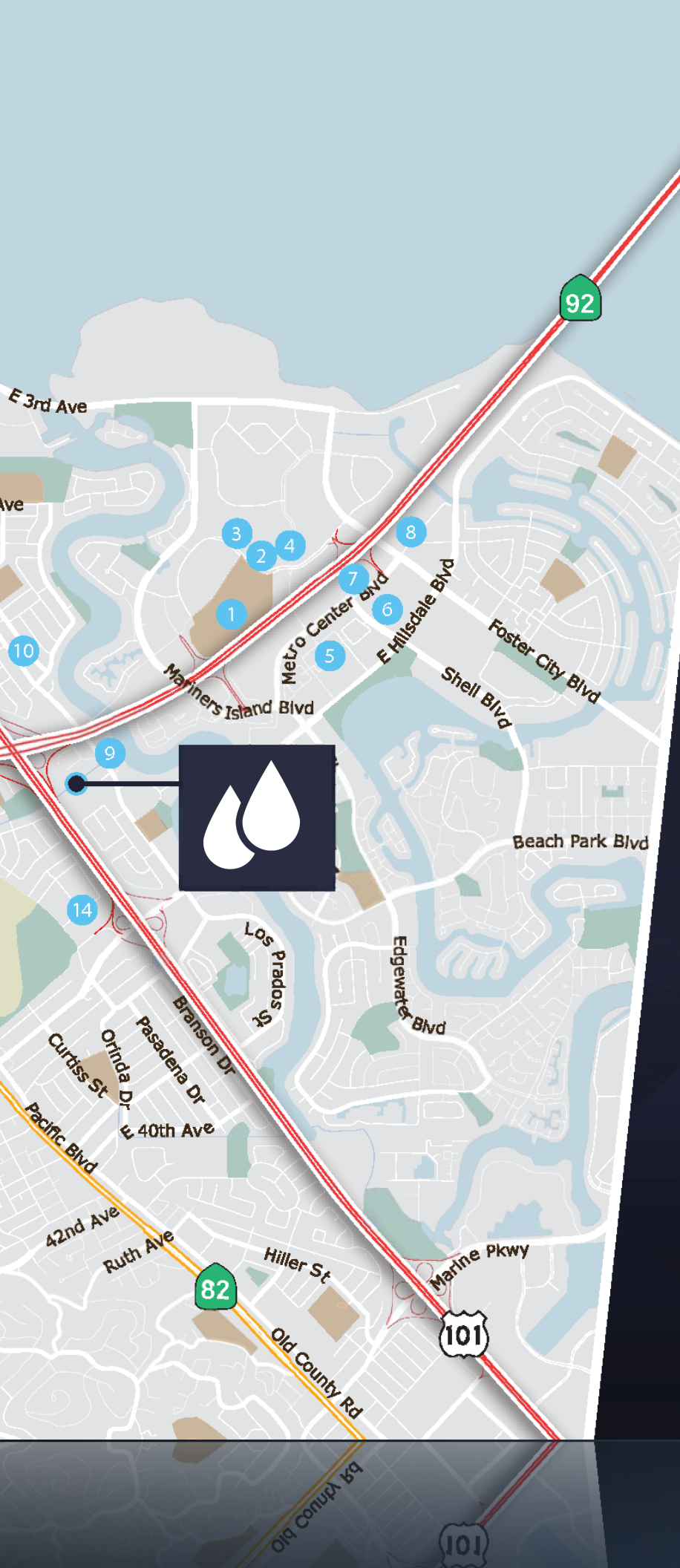


FLOOR PLAN

Our location is conveniently surrounded by shopping and dining venues and located between San Francisco and San Jose.



amenities map



- 1 **Bridgepointe Shopping Center**
Armadillo Willy's
BJ's Brewhouse
Mimi's Cafe
Red Robin
Starbucks
- 2 Chipotle Mexican Grill
- 3 Panda Express
- 4 El Torito
- 5 **MetroCenter**
ABC Seafood Restaurant
China Express
Corner Bakery Cafe
Five Guys Burgers
Specialty's Cafe
- 6 Baja Fresh Mexican Grill
Ike's Lair
- 7 Pieology
Jamba Juice
Noah's Bagels
Starbucks
- 8 Carl's Jr.
iHop
McDonald's
Pizza Hut
Taco Bell
- 9 Apple Fritter
- 10 The Fish Market
- 11 California Chicken
Specialty's Cafe
Round Table Pizza
- 12 **Shoreview Shopping Center**
Aldo's Pizza
America's House
Harry's Shoreview Deli
Round Table Pizza
Subway
Tabla Indian
Trader Joe's
Golden Wok
- 13 Pantry
- 14 **Park Place**
Chipotle Mexican Grill
Pasta Pomodoro
Peet's Coffee
Starbucks
The Habit Burger Grill
Village Hummus
Whole Foods
- 15 **Hillsdale Shopping Center**
Burger King
California Pizza Kitchen
Nordstrom Cafe
Outback Steakhouse
Paul Martin's American Grill
Starbucks
The Cheesecake Factory
The Counter Burger
Trader Joe's
- 16 **25th Avenue**
Baltica
Chef Zhao Bistro
Cobani Gyros and Kebabs
Fortune Star
Kobeya
La Lanterna
Little Shanghai
Mama's Vietnamese Cuisine
Oceanic
San Mateo Coffee
Spicy Empire
Tannourine
The Noodle Shop
The Swingin' Door

FREQUENTLY ASKED QUESTIONS

WHAT DOES A MEMBERSHIP INCLUDE?

SUPER-FAST, RELIABLE INTERNET

Your office has hard-wired (Ethernet) **1 Gigabit** connections, as well as access to Wi-Fi. Private IP addresses and server storage are available at an additional cost.

CONFERENCE ROOM TIME

All plans include a monthly credit allocation that can be used to reserve conference rooms. Reservations can be made online through Membership Portal.

MEMBER NETWORK

Connect with other members through our online community. You can ask questions, share stories, announce product launches and other good news, invite others to events, promote your job listings, or simply find someone to grab a beer with. It's a great way to start meaningful relationships with creative entrepreneurs and business leaders.

FURNITURE

Dedicated Desks and Private Offices include desks, chairs, and lockable filing cabinets.

PRINTING/COPYING/SCANNING

We provide multi-function copier/scanner/printer. Dedicated Desks and Private Offices come with monthly credit allocations specific to your office size.

AMENITIES AND EXTRAS

From ping pong to table soccer, pool tables to bocce ball courts, you'll find that our location has a fun mix of amenities.

UNIQUE, EXCITING EVENTS

We are a community of industry leaders and innovative entrepreneurs. Meet and connect with like-minded people and companies at our weekly and monthly events.

DO YOU CHARGE LATE FEES?

We charge a late fee of 10% of the outstanding invoice, excluding Service Retainers, for payments we haven't received by the 5th day of the month

WHAT MEMBERSHIP PLANS DO YOU OFFER?

MEMBERSHIP

Access to our digital Member Network, events and services - perfect for people who wish to connect with our global community but may only need space a one or two days a month.

A shared workspace in a common area. When you purchase a Dedicated Desk, there is no need to reserve a particular workspace in advance each day; you can come and go as needed and use any available desk.

DEDICATED DESK

An assigned desk space in a large open area or enclosed office shared with other members. This dedicated space comes with a lockable filing cabinet for your personal belongings. Desktops may be set up and left overnight.

This plan includes access to our digital Member Network, events and services, 24/7 keycard access at your primary building, as well as 5 monthly credits for reserving workspaces and conference rooms.

PRIVATE OFFICE

A fully enclosed, lockable office space. Your company can add on more offices as you grow.

This plan includes access to our digital Member Network, events and services, 24/7 keycard access at your primary building, as well as monthly credits for reserving workspaces and conference rooms that correlate with your office size (minimum of 12 credits for a 1 person office).

DO ALL MEMBERSHIPS BEGIN ON THE 1ST OF THE MONTH?

Dedicated Desk and Membership plans begin the day you sign up and are billed monthly. Private Office plans begin on the 1st of the month. Our one-calendar month move-out policy requires move out on the last day of the month for Private Offices and Dedicated Desks, allowing new members to move in on the 1st of the month. If this day lands on a weekend, arrangements will be made accordingly.

WHAT IF I'M LOOKING FOR A PRIVATE OFFICE OR DEDICATED DESK MORE THAN 30 DAYS IN THE FUTURE?

If you're looking to schedule a start date on a longer timeline, please speak with our Community Manager at your desired time. We're happy to discuss potential options with you.

CAN I STOP IN OR SHOULD I MAKE AN APPOINTMENT FOR A TOUR?

Tours must be scheduled in advance. This ensures our availability and helps our team focus on helping you choose the best plan. Give us a call at +1(650) 865-3980 or email us at hello@2waterspark.com to schedule a tour!

AM I ALLOWED TO BRING MY DOG? WHAT'S YOUR PET POLICY?

Yes. However, If you plan on bringing a pet to the building, you will be solely responsible for any injury or damage caused by your pet to other members or their property. We are not responsible for any injury to any pet brought into the building. In addition, any pet brought into the building must be vaccinated. We reserve the right to restrict your ability to bring your pet at our discretion.

WHAT IS THE AVERAGE SQUARE FOOTAGE OF A OFFICE?

Every office is uniquely designed and total square footage differs from location to location. Each office provides more than enough room for a team to work comfortably. Schedule a tour to check it out for yourself!

WHAT IF MY COMPANY NEEDS PHONE SERVICE?

Phone service is currently only available for Private Offices. Unlimited domestic VoIP phone service is available for purchase through Vonage for an additional \$60/month per user in all U.S. locations (prices outside the U.S. may vary). International calling services are available at an additional fee. If your team has VoIP phone service that you'd like to maintain, simply plug into the ports in your office at no additional charge.

CAN I ADD MAIL AND PACKAGE HANDLING?

Membership membership plans do offer for mail and package handling. If you would like to add mail and package handling, please reach out to our Community team. There is an additional fee of \$50 per month.

Mail and package handling is included for Dedicated Desk and Private Office membership plans.

CAN I HAVE MULTIPLE MAILING ADDRESSES FOR ONE ACCOUNT?

No, we are unable to support multiple mailing addresses for one account.

HOW DO I RESERVE A CONFERENCE ROOM OR A WORKSPACE?

You can make a reservation for a conference room or a workspace via the Member Portal. For workspaces, you just need to select a location and the desired date. For conference rooms, you'll also be able to select available rooms at our locations based on the room size and length of the reservation.

For both workspace and conference room reservations, we have a first-come, first-served policy and recommend making a reservation as early as possible to guarantee availability.

WHAT SIZE CONFERENCE ROOMS DO YOU HAVE?

Conference room size varies per location. Generally, our conference rooms accommodate teams up to 16.

WHAT IS A Desk?

A desk provides access to a designated work area in a shared common room, working side-by-side with other members. You'll have ample space to set up your laptop for the day, a power port and Wi-Fi. In addition, you also have access to a host of amenities.

WHEN CAN I RESERVE A WORKSPACE?

Workspaces can be reserved Monday through Friday from 9 AM to 6 PM local time. You can reserve as many days as you would like on an a la carte basis at a cost of 2 reservation credits per day.

I HAVE A MEMBERSHIP PLAN. CAN I BOOK A CONFERENCE ROOM/WORKSPACE ON THE WEEKEND?

At this time, a Membership plan only allows access to workspaces and conference rooms from Monday to Friday from 9 AM to 6 PM local time.



2waterspark.com

(650) 865-3980
HELLO@2WATERSPARK.COM
2 WATERS PARK DRIVE
SUITE 250
SAN MATEO, CA 94403